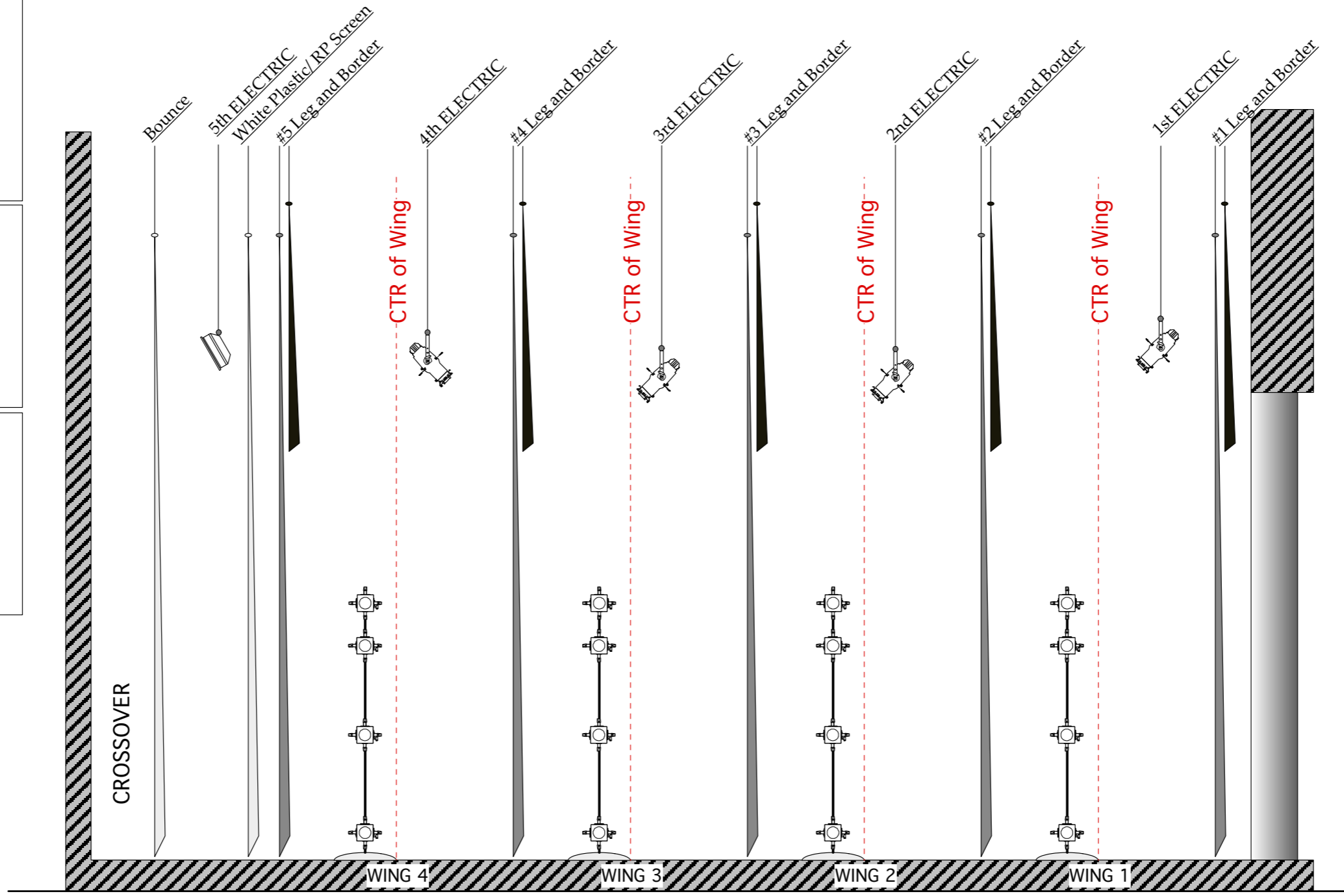


Note:
Wings are minimum 7'-6" wide from leg to leg. Electrics and booms are placed in reference to the centerline of the wing. See plate 1 for placement dimensions. Border and electric trim TBD by designer on site.

Note:
The #6 electric should be positioned US/DS depending on individual theatre bounce/cyc configuration. Final placement TBD on site by designer.

Note: FOH
The twelve FOH front light units light onstage wings 1&2. Units should cover stage with three across. If rep FOH rig exists, Designer will assign units on site. If not, spacing indicated on plate one should be used.



LEGEND

- ETC Source Four 50 degree, 575watt
- ETC Source Four 36 degree, 575watt
- ETC Source Four 26 degree, 575watt

KEY

- 187 CHANNEL #
- 23 INSTRUMENT #
- GOGO INDICATOR

NOTES

- This Light plot is designed to convey basic lighting concepts of HB2s Lighting needs. It is not tailored to your space and many decisions will have to be made by desinger on site.
- All f ktures hung on 1'-6" centers unless otherwise noted.

CONTACT

Brian Walker
Production Manager-----713.535.3257

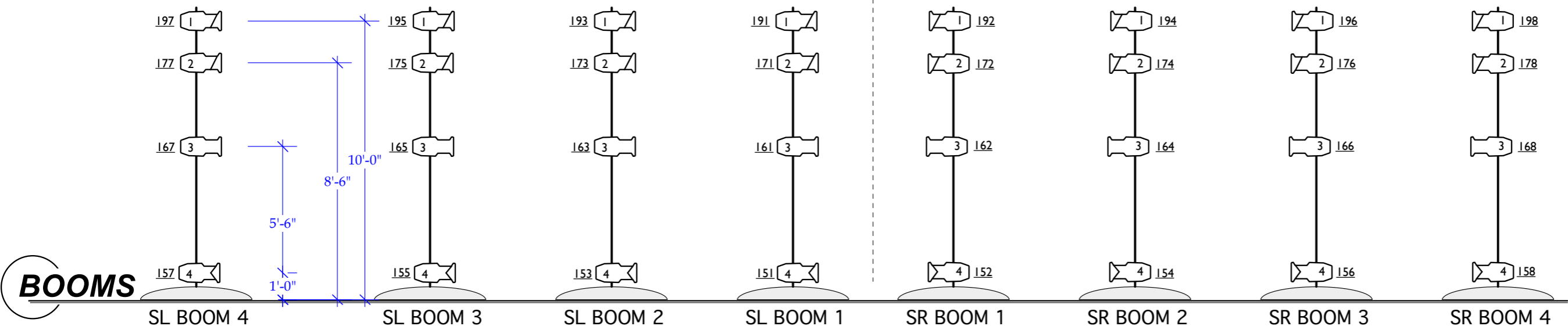
HOUSTON BALLET
Ben Stevenson Academy

HB Academy
Touring Rep Plot

Rep Design by Brian Walker

SECTION

Dimensions are Typical for all Booms. Measurements are from lowest possible position on boom to center of f kture lens.



BOOMS

THIS DRAWING REPRESENTS VISUAL CONCEPTS AND CONSTRUCTION SUGGESTIONS ONLY.

PLATE DETAILS:
PLATE1: Overhead light plot
PLATE2: Booms/Section
PLATE3:

SCALE:
1/4" = 1'-0"

DRAWN BY:
ROBERT EUBANKS
713-535-3261

DATE: Dec. 20th 2010
PLATE: 2 OF: 2
REVISION: F

1921 W. BELL HOUSTON, TX 77019 (713) 535-6300 www.houstonballet.org

HOUSTON BALLET PRODUCTION DEPT. (713) 535-3260 bwalker@houstonballet.org